

Early-life environmental exposures and child respiratory health: the exposome reveals its first results

V Siroux, PhD

L. Agier, X. Basagaña, L. Maitre, B. Granum, P. Bird, M. Casas, B. Oftedal, J. Wright, S. Andrusaityte, M. de Castro, E. Cequier, L. Chatzi, D. Donaire-Gonzales, R. Grazuleviciene, L. Haug, A.K. Sakhi, V. Leventakou, R. McEachan, M. Nieuwenhuijsen, I. Petraviciene, O. Robinson, Theano Roumeliotaki, J. Sunyer, I. Tamayo, C. Thomsen, J. Urquiza, A. Valentin, R. Slama, M. Vrijheid



Early-life exposome and lung function in children in Europe: an analysis of data from the longitudinal, population-based HELIX cohort



Lydiane Agier, Xavier Basagaña, Lea Maitre, Berit Granum, Philippa K Bird, Maribel Casas, Bente Oftedal, John Wright, Sandra Andrusaityte, Montserrat de Castro, Enrique Cequier, Leda Chatzi, David Donaire-Gonzalez, Regina Grazuleviciene, Line S Haug, Amrit K Sakhi, Vasiliki Leventakou, Rosemary McEachan, Mark Nieuwenhuijsen, Inga Petraviciene, Oliver Robinson, Theano Roumeliotaki, Jordi Sunyer, Ibon Tamayo-Uria, Cathrine Thomsen, Jose Urquiza, Antonia Valentin, Rémy Slama, Martine Vrijheid, Valérie Siroux**



Summary

Background Several single-exposure studies have documented possible effects of environmental factors on lung function, but none has relied on an exposome approach. We aimed to evaluate the association between a broad range of prenatal and postnatal lifestyle and environmental exposures and lung function in children.

Lancet Planet Health 2019; 3: e81–92

Published Online
February 5, 2019

Environmental exposures, lifestyle and Lung function



Smoking



Air Pollution



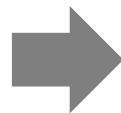
Diet



Chemical exposures



Greenness



Lung function

- Smoking (Stocks et al, Lancet Resp Med 2013), outdoor air pollution (Gauderman et al, N Engl J Med 2015) are associated with deficits of lung function growth.
- Emerging concerns for other exposures, including chemical exposures (Gascon et al, Epidemiology 2014; Vernet et al, Env Res 2017; Hansen et al, EHP 2014):
 - persistent organochlorine compounds, such as PCBs (*electric insulators*) and DDT (*pesticides*),
 - Perfluorinated compounds (PFASs) (*non-stick cookware, water-repellent clothing, stain resistant fabrics, carpets*),
 - phthalate metabolites and phenols (*manufacture of plastics, solvents, personal care products*)

Previous studies focused on single exposure or family of exposures

Issues with single exposure studies

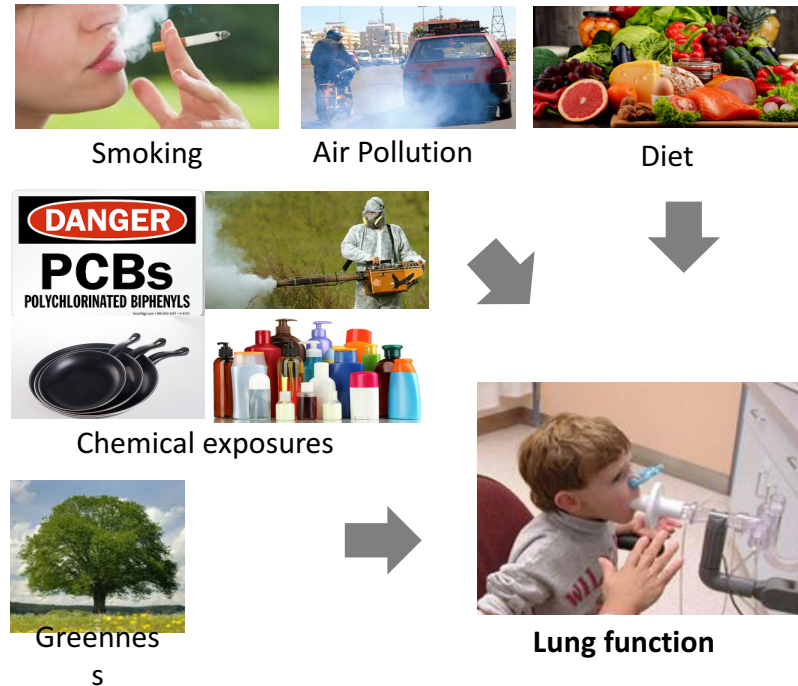
- **Selective reporting of associations**
(by authors and journal) →
Publication bias
- **No correction for multiple testing**
- Cannot take into account
confounding by co-exposures
- Lack of consideration of **“mixture effects”**

Exposome approach

calls for a holistic view of the effects of environmental exposures on human health by evaluating multiple exposures simultaneously

Aims

To evaluate the association between prenatal and postnatal environmental exposures and FEV₁ in childhood, in the large European Human Early-life exposome (HELIX) study



Aims

To evaluate the association between prenatal and postnatal environmental exposures and FEV₁ in childhood, in the large European Human Early-life exposome (HELIX) study, **using an exposome approach**



The Helix population



- 6 cohorts with similar design in 6 EU countries
- Recruitment between 2003 and 2010 according to cohort
- Sample size :
 - Entire cohorts: n=32,000 mother-child pairs
 - Helix subcohort: n=1,200 mother-child pairs from the 6 cohorts
- Neuro-development tests and lung function tests at 6-12 yrs



In utero
Recruitment
(before week 24)



Mid pregnancy:
1 spot urine sample
1 blood sample
(Stored at -80°)

Birth
Weight
Gestational duration
Head circumference

6-12 yrs
Neuro-development tests
Lung function test



Spirometry test



- **By trained research technicians using EasyOne spirometer and a standardised protocol**
 - 3 acceptable manoeuvres and reproducible manoeuvres (difference below 200 milliliters between the two highest values for forced vital capacity (FVC) and FEV_1)
- Acceptability and reproducibility criteria **refined using data recorded from the spirometer**
 - $BEV/FVC < 5\%$; $1.5s < FET < 10s$
 - difference below 200 millilitres between the two highest values for forced vital capacity (FVC) and FEV_1
- **Assessment of the curve selection process** on 243 examinations by looking at the shape of the curves:
 - same curve selected for 79% of the examination
 - when a different curve was selected, Pearson correlation between FEV_1 of the two different curves = 0.96

Integrated tools for exposome assessment

17 exposure families: 85 prenatal and 125 postnatal exposure variables

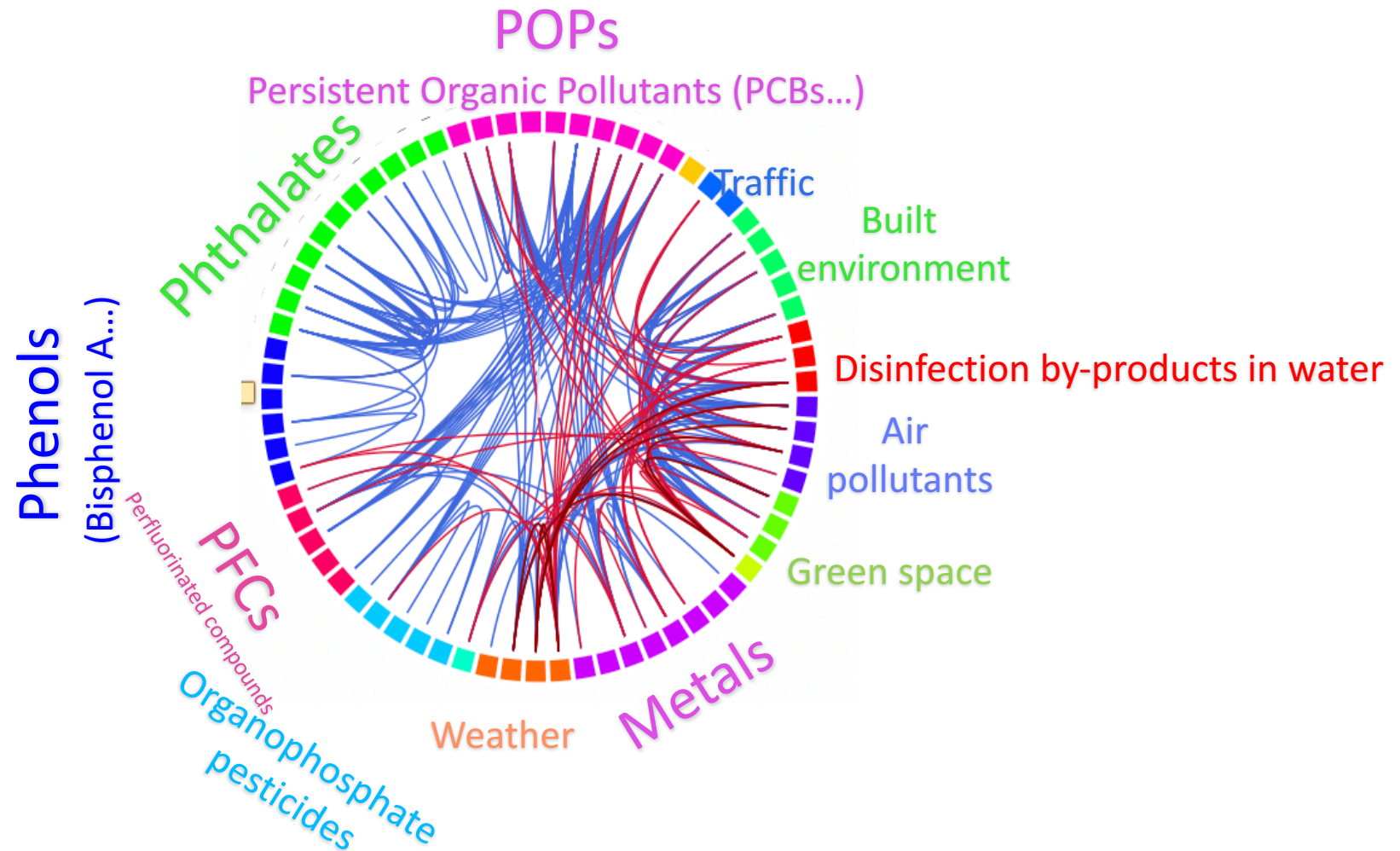
- **Outdoor factors** assessed from monitoring stations, geospatial models, land use databases and satellite data
- **Chemical exposures** measured in plasma, serum, whole blood or urine samples
- **Socio-economic** (Family Affluence Score) **and lifestyle factors** (smoking, diet, breastfeeding, physical activity, alcohol, pets, sleep) assessed by questionnaires



Exposure families
Atmospheric pollutants
UV
Surrounding natural space
Meteorology
Built environment
Traffic
Road traffic noise
Indoor air
Organochlorine compounds
Brominated compounds
Perfluorinated alkylated substances (PFAS)
Metals and essential elements
Phthalate metabolites
Phenols
Organophosphate pesticide metabolites
Water disinfection By-products
Socio-economic and lifestyle

Correlation structure of HELIX full Exposome

(86 exposures from 15 families of factors assessed in 1287 mother-child pairs)

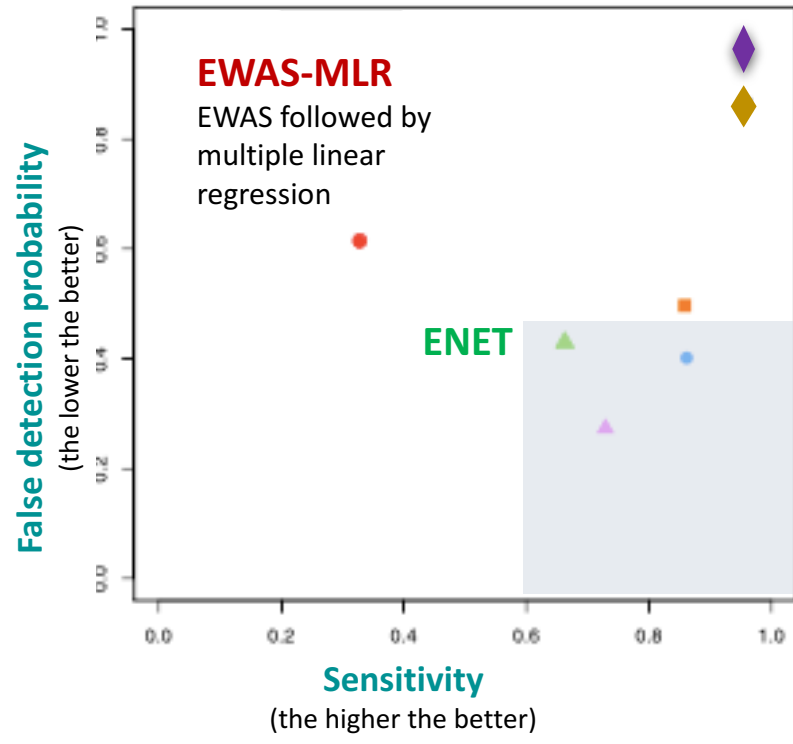


Line colors indicate sign of correlation coefficient
(red: $\rho < 0$)

Not adjusted for cohort

(Vrijheid et al, EHP, 2014; Tamayo et al, manuscript)

Statistical analysis



Univariate fishing expedition

(no FDR correction)

EWAS

Exposome wide association study (with FDR correction)

GUESS

(Bayesian variable selection method)

DSA

(Deletion/
Substitution/
Addition Algorithm)

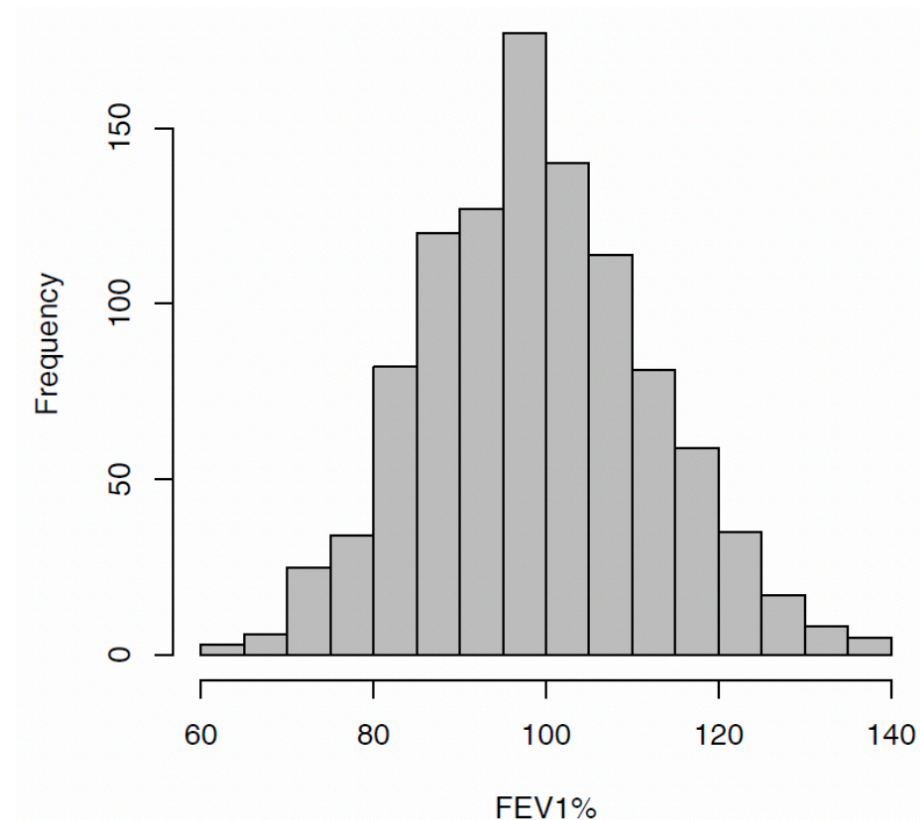
Simulation study aiming at identifying $k=1, 2, 10$ or 25 real predictors out of 238 exposures (average results)

(Agier et al., *EHP* 2016)

1. **Imputation** of missing values (multiple imputation) (White, *Stat Med* 2011)
2. **Standardization** of exposures (Normalization)
3. **Deletion-Substitution-Addition (DSA) algorithm** (Sinisi, 2004)
 - Consideration of all exposures simultaneously (order one terms only)
 - Consideration of all order two exposure-exposure interaction terms (DSA2 model)
4. **Exposome-Wide Association Study (ExWAS)** (Patel, *PLoS One* 2010)
 - Family-wise error rate **multiple testing correction** method (Li MX, *Hum Genet* 2012)
5. All analyses were **adjusted for a priori selected factors**
 - Cohort, sex, age, height, parental country of birth, breastfeeding duration, season of conception, presence of older siblings, parental education level, maternal age, maternal BMI, postnatal passive smoking, prenatal active and passive smoking.

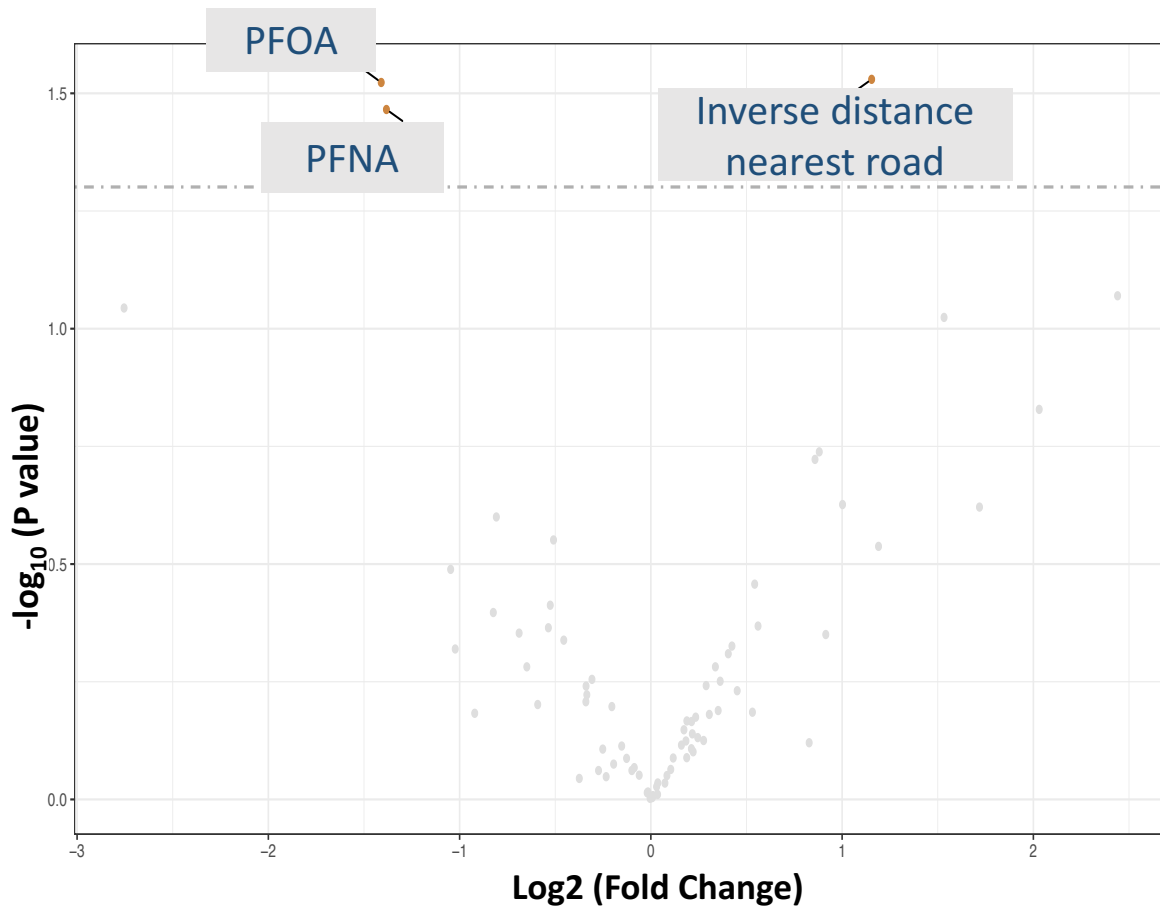
Population description, n=1,033

Factors	Mean (sd) / %
Cohort : BIB, %	14%
EDEN, %	15%
INMA, %	18%
KANC, %	14%
MOBA, %	24%
RHEA, %	15%
Child sex, % males	47%
Child age (years), m(sd)	8.07 (1.58)
Both parents native from the cohort country, %	84%
Highest parental education: High	56%
Middle	40%
Low	4%
Maternal age at pregnancy (years)	30.9 (4.7)
Active smoking during pregnancy, nb cigarettes, m(sd)	0.5 (2.0)
Passive smoking during pregnancy, %	40%
Passive smoking during infancy, %	35%
FEV ₁ %pred	98.8 (13.2)



Prenatal Exposome - FEV₁ association

ExWAS results



Exposure variable	Transf. before IQR standard.	IQR	ExWAS		ExWAS-MLR	
			Estimate [95% CI]	P-value	Estimate [95% CI]	P-value
PFNA, $\mu\text{g/L}$	Log2	0.83	-1.4 [-2.7; -0.1]	0.03	-0.8 [-2.8; 1.2]	0.42
PFOA, $\mu\text{g/L}$	Log2	0.77	-1.4 [-2.7; -0.1]	0.03	-0.6 [-2.6; 1.3]	0.52
Inverse distance to nearest road, m^{-1}	Log	1.17	1.1 [0.1; 2.2]	0.03	1.1 [0.1; 2.2]	0.03

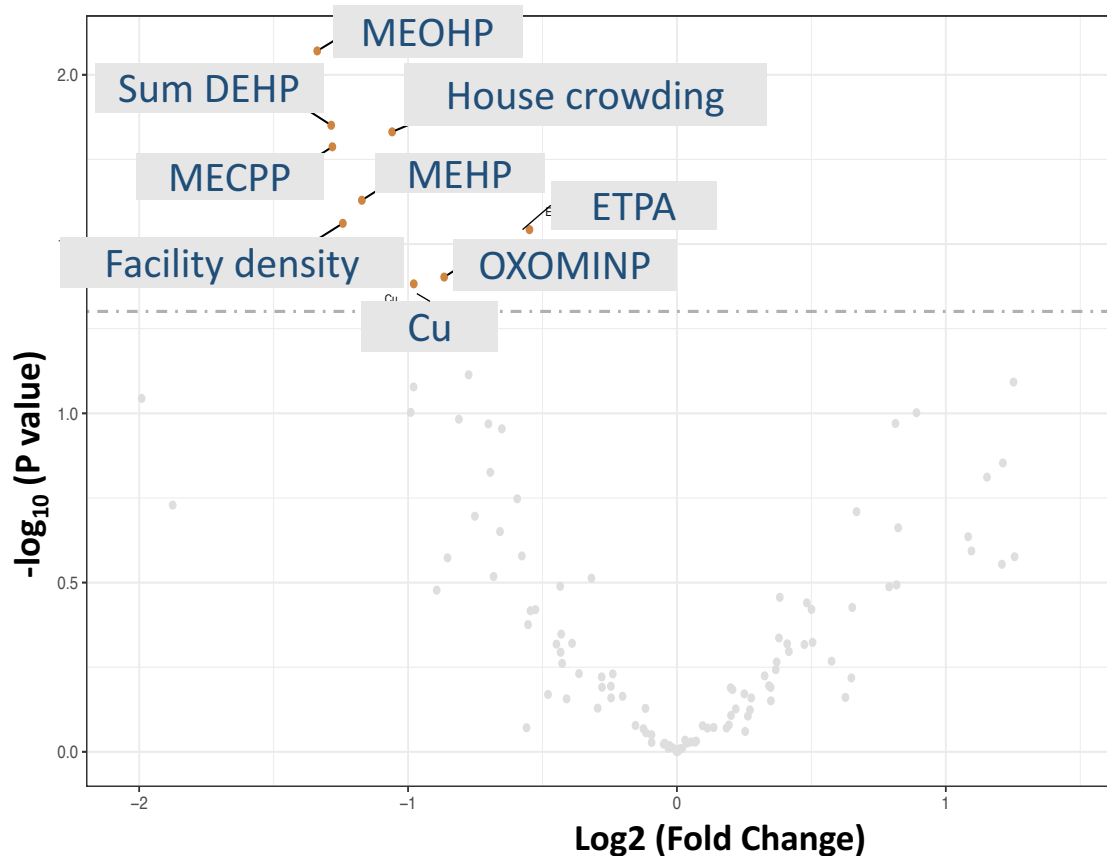
ExWAS-MLR : adjusting for potential confounding by co-exposure

DSA / DSA2

No significant results

Postnatal exposome - FEV₁ association

ExWAS results

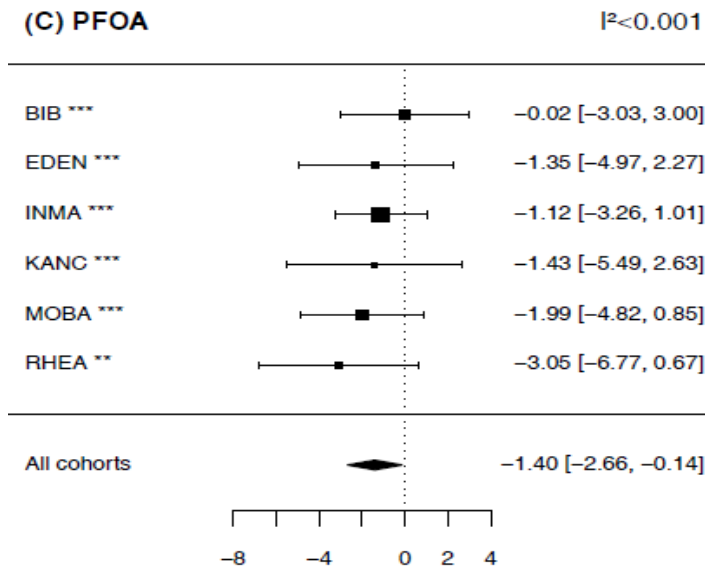
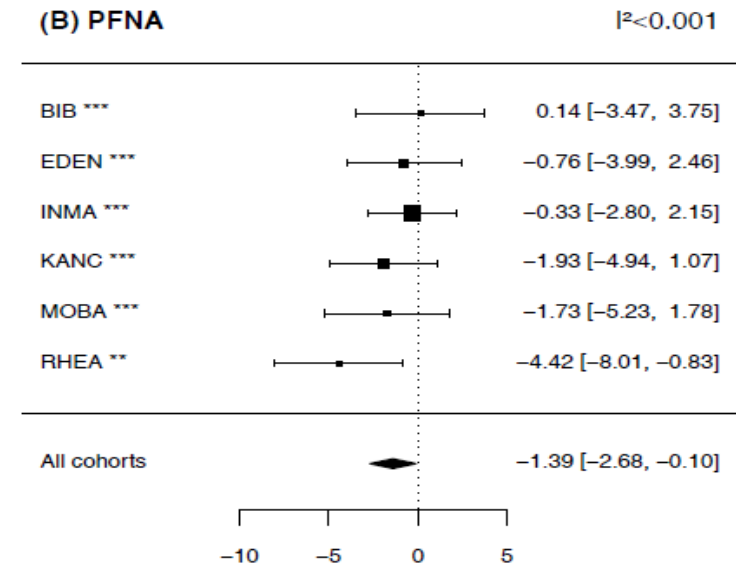
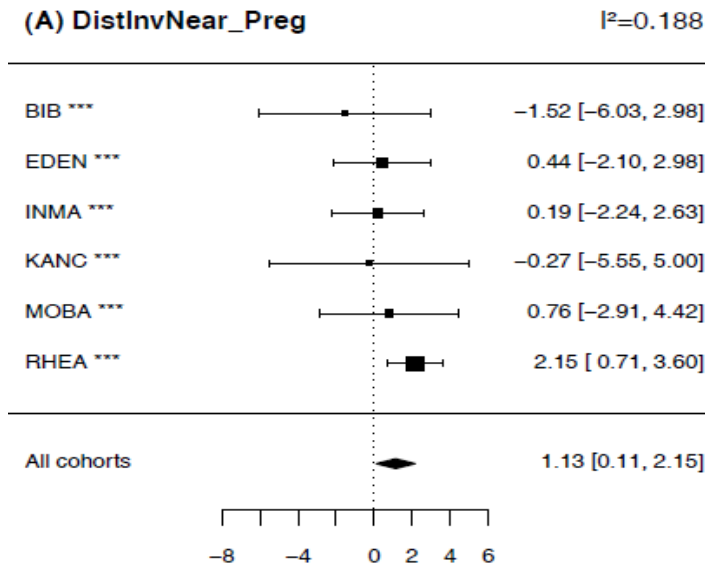


Exposure variable	Transf. before	IQR	ExWAS		ExWAS-MLR	
			Estimate [95% CI]	p-value	Estimate [95% CI]	p-value
Facility density /km²	Log	1.32	-1.2 [-2.3;-0.1]	0.03	-1.2 [-2.7;0.3]	0.13
Copper, µg/L	Log ₂	0.16	-1.0 [-1.9;-0.0]	0.04	-0.9 [-1.8;0.1]	0.06
Ethyl-paraben, µg/g of creatinine	Log ₂	0.98	-0.5 [-1.0;-0.1]	0.03	-0.6 [-1.2;-0.1]	0.02
Sum of (DEHP), µg/g of creatinine	Log ₂	0.85	-1.3 [-2.3;-0.3]	0.01	-1.3 [-3.1;-0.4]	0.13
MECPP, µg/g of creatinine	Log ₂	0.87	-1.3 [-2.3;-0.2]	0.02	-	-
MEHHP, µg/g of creatinine	Log ₂	0.87	-1.2 [-2.2;-0.2]	0.02	-	-
MEOHP, µg/g of creatinine	Log ₂	0.84	-1.3 [-2.3;-0.3]	0.01	-	-
OXOMINP, µg/g of creatinine	Log ₂	1.34	-0.9 [-1.7;0]	0.04	-0.4 [-1.6;0.8]	0.54
House crowding, nb people	None	1.00	-1.1 [-1.9;-0.2]	0.01	-0.9 [-1.7;0.0]	0.04

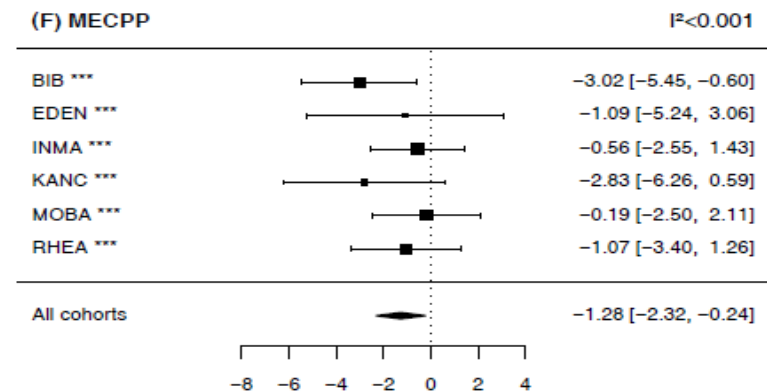
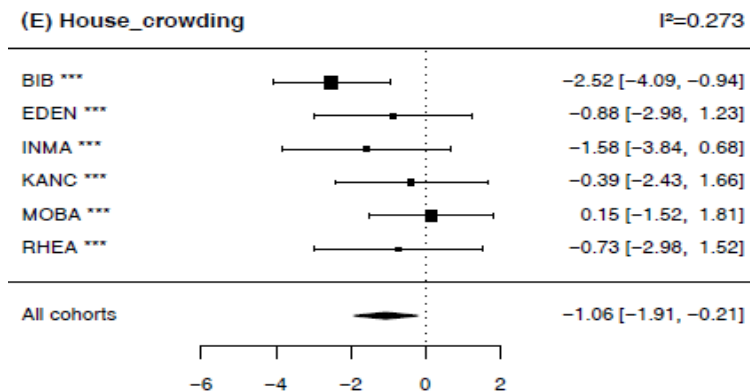
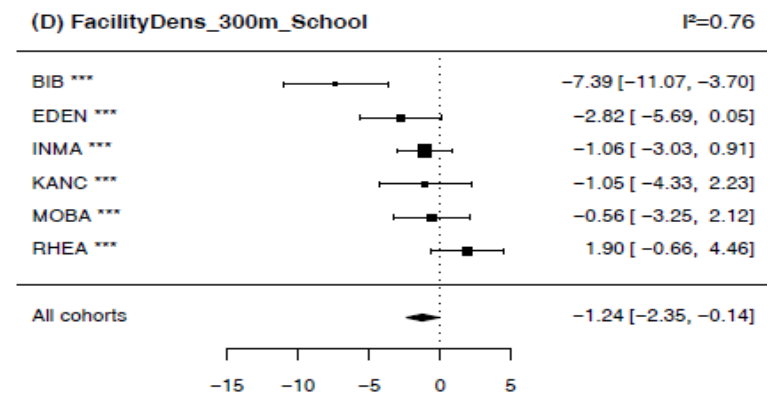
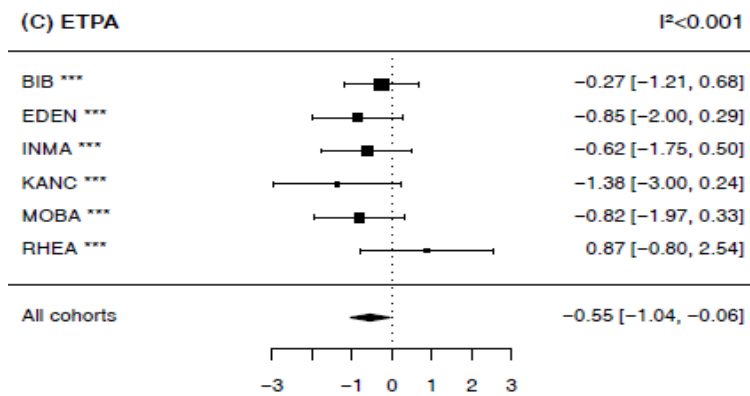
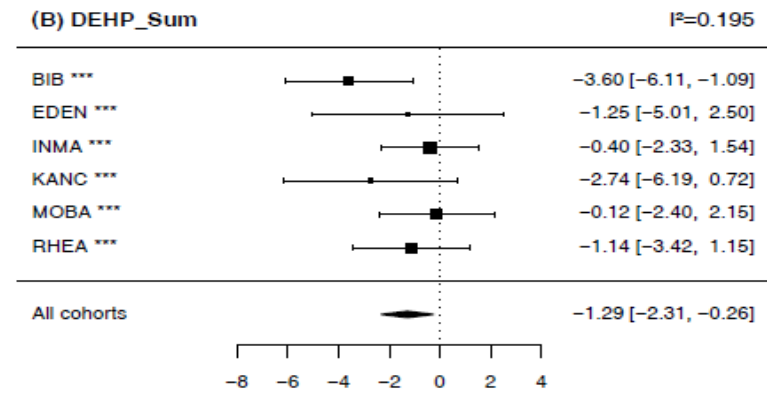
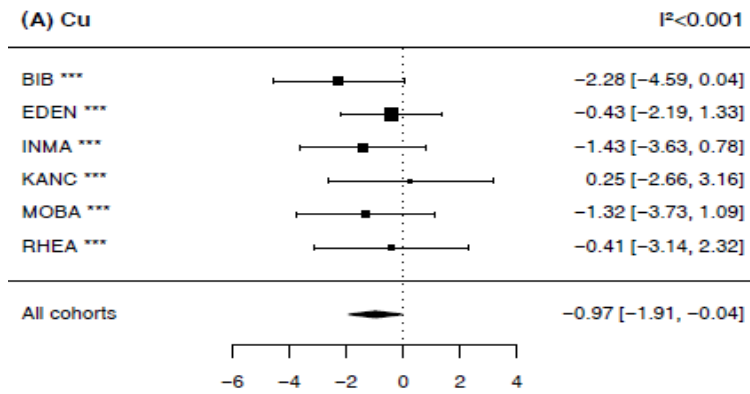
DSA / DSA2

No significant results

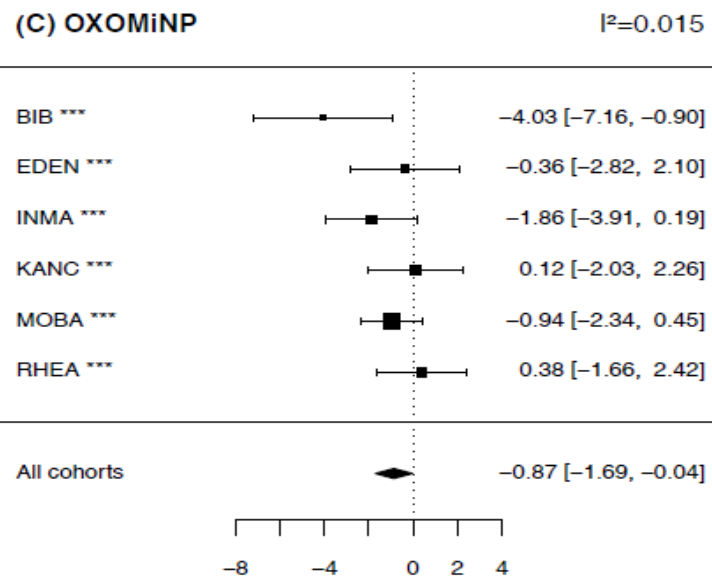
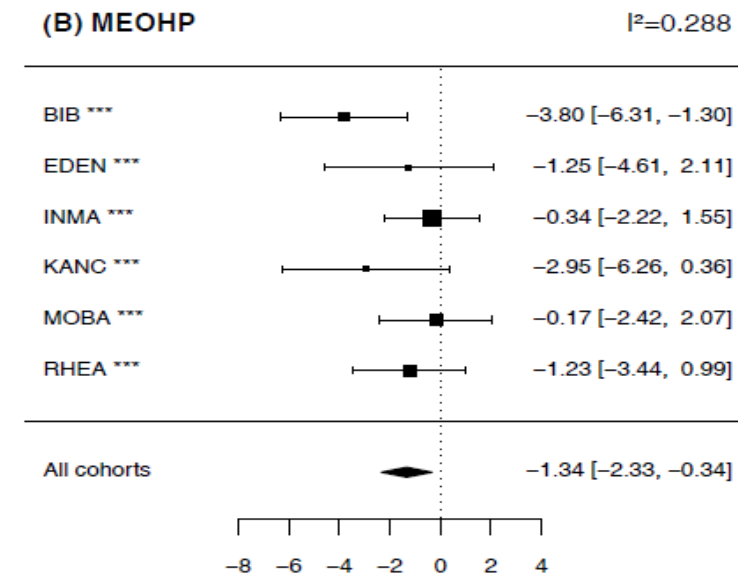
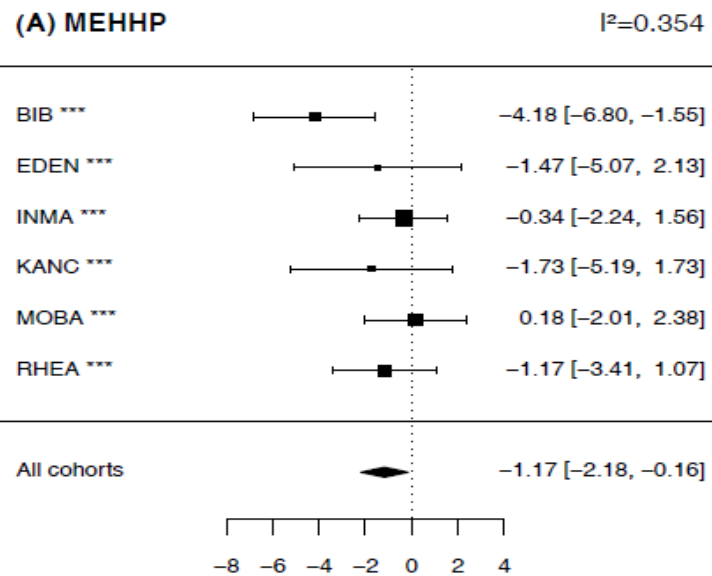
Cohort-by-cohort analysis of the association between pretanal exposome and FEV₁%



Cohort-by-cohort analysis of the association between postnatal exposome and FEV₁%



Cohort-by-cohort analysis of the association between postnatal exposome and FEV₁%



CONCLUSION

- First study addressing the impact of the exposome on lung function in children by considering a broad spectrum of prenatal and postnatal environmental factors.
- ExWAS was in favor of lower FEV₁ in childhood with
 - prenatal exposure to perfluorinated compounds (PFNA, PFOA)
Association supported by experimental (deWitt et al Toxicol Pathol 2012) and animal studies (Ryu et al, Am J Physiol Lung Cell Mol Physiol 2014), though data in human are scarce (Impinen et al, Env Res 2018; Qin et al. Env Res 2017).
 - postnatal DEHP and DINP phthalate metabolites
Convergence with previous findings (Vernet et al EHP 2017; Whyatt et al, EHP 2014; Lin et al, Sci Total Environ 2018).
 - postnatal exposure to phenols (ethyl-paraben)
Convergence with previous findings (Vernet et al EHP 2017)
 - postnatal exposure to copper (Pearson et al, Eur J Clin Nutr 2005) and house crowding (Cardoso et al., BMC public health 2004).

DISCUSSION

- **Limited statistical power** due to the multiplicity of the exposures that were tested and the rather small effect on lung function that is expected for these exposures
 - No exposure identified by DSA and no two-way interaction between exposures
- **Different type and magnitude of misclassification bias** between exposures
 - Cautious comparison of the exposure-health association between exposures
- All estimates are available for future meta-analyses
- **This exposome approach should be seen as an initial screening step**, making it possible to identify questionable exposures for which more specific research is needed.

DISCUSSION

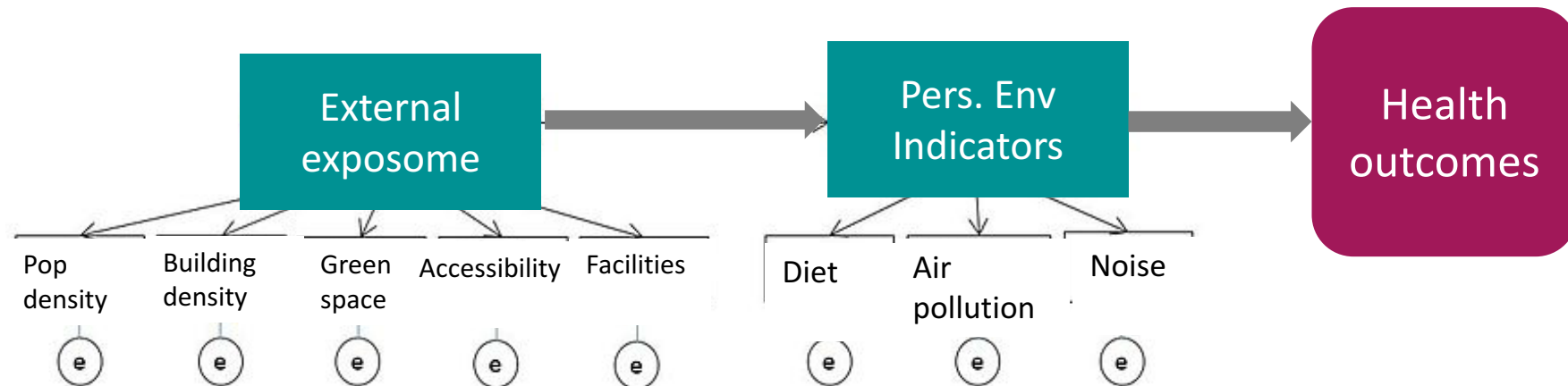
Public health implications

- Results observed for DINP are of particular public health importance as the use of DINP is currently increasing in Europe as substitution to DEHP and is now among the most common used plasticizer.
- The chemical substances identified are ubiquitous; In helix 9 pregnant women and 9 children over 10 had level above the detection threshold
- Preventive measures aimed at lowering exposure to the identified ubiquitous chemicals, through stricter regulation and through informing the public by labelling these chemicals in consumer products, could help to prevent early-life lung function impairment, which in turn might have benefits for long-term health

PERSPECTIVES

To expand the statistical approaches in exposome research in order to:

- Assess combined effect of exposures (i.e. clustering approaches)
- Increase statistical power by reducing the dimension of the exposome by integrating a-priori knowledge, i.e. from biological pathways
- Improve causal inference , i.e. by integrating causal structure within the exposome



Aknowledgments

Centre for Research in Environmental Epidemiology (ISGlobal) , Spain	Lea Maitre, Xavier Basagaña, Mariona Bustamante, Maribel Casas, David Donaire, Diana van Gent, Juan Ramon Gonzalez, Mark Nieuwenhuijsen, Oliver Robinson, David Rojas, Jordi Sunyer, Ibon Tamayo, Martine Vrijheid
Norwegian Institute for Public Health (NIPH) Oslo	Catherine Thomsen, Berit Granum, Kristine Gutzkow, Helle Margrete Meltzer, Per Schwarze
University of Crete (UoC) , Greece	Leda Chatzi, Vicky Lebentakou, Marina Vafeiadi
Institut National de la Santé et de la Recherche Medicale (Inserm) , France	Rémy Slama, Valérie Siroux, Lydiane Agier , Solène Cadiou, Lise Giorgis Allemand, Sarah Lyon-Caen, Joane Quentin
Bradford Teaching Hospitals NHS Foundation Trust (BTHFT) , United Kingdom	John Wright, Lesley Fairley, Rosemary McEachan, Dan Mason, Dagmar Waiblinger, ...
Vytauto Didziojo Universitetas (VDU) Lithuania	Regina Grazuleviciene, Sandra Andrusaityte, Asta Danileviciute
Imperial College of Science, Technology and Medicine (ICL) , United Kingdom	Muireann Coen, Toby Athersuch, Hector Keun, Esther Vizcaino-Garcia
Centre for Genetic Regulation (CRG) , Spain	Eva Borrás, Xavier Estivill, Eduard Sabido
Veiligheids- en Gezondheidsregio Gelderland Midden (VGGM) Netherlands	Peter van den Hazel
Hylobates Consulting S.R.L. (HYLO) , Italy	Francesca Bucchini, Luca Bucchini
Sensing & Control Systems S.L. (S&C) , Spain	Alberto Fernandez, Antonella Guzzon, Elena Turco
Institut National de l'Environnement et des risques (INERIS) , France	Céline Brochot, Florence Zeman
University Santiago de Compostela (USC-CEGEN) , Spain	Angel Carracedo, Manuela Gago

Funding:



Thank you