



Cancer

Air and Water
Pollutants



**A NEED
FOR
ACTION**

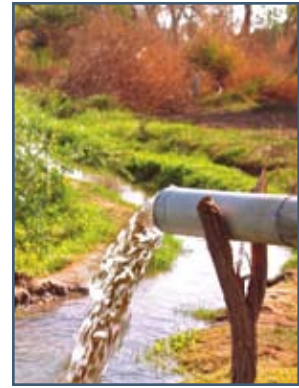
Does breathing air and drinking water contribute to cancer?

Beginning with the landmark Clean Air Act of 1970 and Safe Drinking Water Act of 1974, the Federal government has recognized the need to safeguard two of our most fundamental natural and public health resources: the water we drink and the air we breathe.

Thirty years of regulations and technological advances have made cleaner, healthier air and water for millions of Americans. Yet in the United States:

- Over 105 million people in 2006 lived in counties with air pollutant levels exceeding Clean Air Act standards.¹
- About 24 million people in 2007 were served by community water systems that reported violations of health-based drinking water standards.²
- In 2006 alone, industries reporting to the Toxics Release Inventory released or disposed of 820 million pounds of known or suspected carcinogens,³ 70 million pounds of which went directly into the air or water.⁴

Mounting evidence links dozens of air and water pollutants—including two widespread categories of pollutants, particulate pollution in air and disinfection byproducts in water—with cancer.



Public and private water supplies can be contaminated by pollutants from hazardous waste sites and industrial, commercial, agricultural and domestic sources.

Water pollution and cancer

WHAT DO WE KNOW?

Many different water pollutants increase cancer risk. Exposure to these pollutants can occur by drinking contaminated water or bathing, showering or swimming in it. Ironically, one major water pollutant that increases cancer risk comes from disinfection, a process that protects our health from other diseases.

Disinfecting public water supplies with chlorine reduces illness and death associated with waterborne microbes. But, when chlorine interacts with organic compounds often found in surface water, hundreds of different chemical mixtures—called disinfection byproducts—can form. In experimental animal studies, several disinfection byproducts were found to cause cancer, including chloroform, other trihalomethanes, and some haloacetic acids.⁵ Strong evidence from epidemiologic studies suggests that long-term exposure to disinfection byproducts in drinking water increases the risk of bladder cancer and possibly colon, rectal and esophageal cancers.⁵ Given the vast number of people who get their water from outdated treatment and delivery systems,



even modest elevations in cancer risk from disinfection byproducts can create a significant public health impact.

Disinfection byproducts are not the only water pollutants that may increase cancer risk. Radon in drinking water can contribute to a small but significant increase in the risk of lung cancer by contributing to radiation levels inside buildings.^{5,6} Exposure to arsenic is a well-established cause of bladder cancer as well as of lung, kidney, and non-melanoma skin cancers.⁵ In addition, prostate and liver cancers may also be linked with arsenic in drinking water although the evidence is only suggestive.⁵ In some areas of California, Nevada, Alaska, Michigan, New England, New Mexico and Utah, high levels of arsenic occur naturally in groundwater sources.⁷ Arsenic may also contaminate public and private water supplies in mining and ore processing regions.⁵ Public and private water supplies can be contaminated by many different pollutants from hazardous waste sites and industrial, commercial, agricultural and domestic sources. Studies of water contamination by these sources have observed that a range of pollutants—among them perchloroethylene, trichloroethylene, chlorophenols, and nitrates—are associated with elevated risks of several cancer types.^{5,8}

WHAT CAN WE DO?

How can we reduce the public health risks associated with water pollutants? Here are five broad steps we can take.

- Update water treatment facilities and delivery infrastructure to reduce disinfection byproducts.
- Enhance watershed protection programs to reduce contamination of surface waters.
- Reduce pollution by promoting green chemistry, alternatives assessment, and the sunseting of cancer-contributing substances.
- Ensure that current drinking water standards truly protect public health. For example, EPA recently reduced the standard for arsenic from 50 parts per billion (ppb)—first set in 1942—to 10 ppb. Yet the estimated cancer risk associated with this new standard is still about 1 in 333 people: a risk 30 times greater than EPA usually considers acceptable.⁹
- Create more protective standards for a range of common water pollutants, such as radon, atrazine, arsenic and various disinfection byproducts.⁹

Outdoor air pollution and cancer

WHAT DO WE KNOW?

Outdoor air pollution—also called ambient air pollution—is a mixture of gases and particulates, the exact composition of which depends upon the pollutant sources and meteorological conditions of a given area.¹⁰ Major sources of outdoor air pollutants can include industrial sources, power plants and motor vehicles.

Many outdoor air pollutants are known or suspected to increase the risk of cancer.^{11,12} For example, a large number of carcinogenic pollutants are emitted in the combustion of fossil fuels and as constituents of airborne soot, including: diesel exhaust; benzo[a]pyrene and other polycyclic aromatic hydrocarbons (PAHs); 1,3-butadiene; benzene; inorganic compounds such as arsenic and chromium; radionuclides; formaldehyde; and fine particulate matter (called PM_{2.5} or particles with diameters less than 2.5 micrometers)—particles which often have other carcinogens adsorbed on their surfaces.¹³ Several studies provide evidence that outdoor air pollution can increase cancer risk, among them:

- Occupational studies demonstrating increased risk of lung cancer among railroad, bus garage, trucking, and dock workers exposed to diesel exhaust;¹⁴
- Studies examining populations near specific air pollution point sources such as waste incinerators or metal smelters;^{13,15}
- Studies comparing cancer rates in rural and urban populations, which have consistently found excesses of lung cancer in urban areas, some of which implicate specific industrial air pollution point sources and motor vehicle traffic density.¹³



Estimates suggested that fine particulate matter was causing or contributing to a range of respiratory and cardiac conditions, killing 60,000 people each year.



EVIDENCE

Strength of the evidence linking specific cancers with human exposure to water contaminants^{5,8}

Bladder	■ STRONG: arsenic, water disinfection byproducts
Breast	■ SUSPECTED: organic solvents
Colorectal	■ SUSPECTED: water disinfection byproducts, nitrate
Esophageal	■ SUSPECTED: water disinfection byproducts
Kidney	■ STRONG: arsenic ■ SUSPECTED: nitrate, organic solvents
Leukemia	■ STRONG: benzene ■ SUSPECTED: organic solvents, pesticides
Liver	■ SUSPECTED: arsenic ■ STRONG: arsenic, radon
Non-Hodgkin's Lymphoma	■ SUSPECTED: organic solvents, pesticides
Prostate	■ SUSPECTED: arsenic
Skin	■ STRONG: arsenic



Some of the strongest evidence supporting a link between air pollution and lung cancer emerged in the 1990s from three large prospective cohort studies. These studies and subsequent follow-up analyses showed elevations in lung cancer risk associated with exposure to specific constituents in air pollution, including: particulate matter (PM₁₀ or particles with diameters less than 10 micrometers),¹⁶ SO₂,¹⁶ PM_{2.5},^{17,18} and sulfate particulate exposure.¹⁹ These findings were not attributable to confounding factors such as tobacco smoke. Estimates suggested that PM_{2.5} was causing or contributing to a range of respiratory and cardiac conditions, killing 60,000 people each year.²⁰ These staggering numbers led EPA to set new regulatory standards for PM_{2.5} in 1997.

Since 1980, air quality has improved nationwide through compliance with the National Ambient Air Quality Standards (which sets limits for carbon monoxide, lead, nitrogen oxides, ozone, particulate matter and sulfur dioxide).¹ The improvement can be attributed largely to pollution-control devices and reducing the use of materials and products that emit toxic air pollutants. But we still have a long way to go in reducing the risk of cancer from outdoor air pollutants.

- Despite overall reductions, levels of certain pollutants—including some carcinogens—have not declined in some areas of the country because of local or regional releases.²¹
 - In 2006, over 100 million people were living in communities where at least one of the six criteria air pollutants exceeded the regulatory limits.¹
- EPA estimates more than 270 million people live in census tracts for which the lifetime cancer risk from hazardous air pollutants exceeds a 10-in-one-million risk.²¹

Unfortunately, controlling pollutants at the “end of pipe” after they have been created can never be fully effective, and the costs of such controls become prohibitive as their efficiency goes up. Eliminating pollutants at the source through redesigning technologies to make them inherently non-polluting is more effective.

WHAT CAN WE DO?

There are a number of things we can do to reduce the risk of cancer from outdoor air pollutants.

- Increase enforcement of current regulatory standards.
- Continue to improve those standards based upon monitoring data and related health studies.
- Support the development and adoption of innovative, non-polluting technologies.
- Expand, support, and incentivize the use of public transportation systems.

Indoor air pollution

WHAT DO WE KNOW?

Adults in the United States spend approximately 90% of their time indoors.²² As a result, the health risks—including cancer risk—associated with exposure to indoor air pollutants can be significant. The very places we consider safe—our homes, workplaces, schools and health care facilities—may be a major source of exposure to air pollutants.

During the early 1980s, EPA conducted the Total Exposure Assessment Methodology (TEAM) Study to determine exposure to toxic air pollutants on a population basis in a range of microenvironments, including ambient and indoor air as well as exposure via water and food. Results from this study were striking: personal and indoor exposures often greatly exceeded the outdoor concentration of dozens of air toxics, leading to the conclusion that, “indoor air in the home and at work far outweighs outdoor air as a route of exposure to these chemicals.”²³

Indoor air pollution comes from many sources, including outdoor pollution filtering into buildings; contaminants in construction materials; consumer and office products containing or producing volatile or aerosolized compounds; gases or volatile compounds emanating from the soil or water near or below buildings; showers or other hot-water sources containing volatile contaminants; vehicular exhaust from attached garages; tobacco smoke; and combustion byproducts from heating and cooking.²⁴ The levels of indoor air contaminants are also



The very places we consider safe – our homes, our workplaces as well as our schools and health care facilities – may be a major source of pollutant exposures.



EVIDENCE (continued)

EVIDENCE: Strength of the evidence linking specific cancers with human exposure to agents in air pollutants* 10–13

- Bladder** ■ **STRONG:** coal tars ■ **SUSPECTED:** diesel exhaust, PAHs
- Breast** ■ **STRONG:** environmental tobacco smoke ■ **SUSPECTED:** dioxin, PAHs
- Esophageal** ■ **SUSPECTED:** soot **Laryngeal** ■ **STRONG:** asbestos
- Leukemia** ■ **STRONG:** benzene and other solvents ■ **SUSPECTED:** pesticides
- Lung** ■ **STRONG:** air pollution, arsenic, asbestos, chromium, coal tars, diesel exhaust, environmental tobacco smoke, nickel, PAHs, particulate air pollution, radon, soot, wood dust
■ **SUSPECTED:** benzene
- Multiple myeloma** ■ **STRONG:** benzene ■ **SUSPECTED:** dioxin

Mesothelioma ■ **STRONG:** asbestos **Non-Hodgkin’s Lymphoma** ■ **STRONG:** benzene, dioxin ■ **SUSPECTED:** pesticides

Prostate ■ **SUSPECTED:** arsenic, dioxin, PAHs **Soft-tissue sarcoma** ■ **STRONG:** dioxin **Skin** ■ **STRONG:** arsenic, coal tars, PAHs

* For a complete list of the 187 compounds regulated as Hazardous Air Pollutants by the 1990 Amendments to the Clean Air Act and information about their links with cancer, see: <http://www.epa.gov/ttn/atw/hlthef/hapindex.html>



highly dependent on ventilation characteristics of the building as well as the season.

Indoor air pollutants can contribute to a wide range of acute and chronic health conditions, including cancer. Agents detected in the indoor environment with known or suspected links to cancer include radon, environmental tobacco smoke, asbestos, formaldehyde, chloroform and pesticides.^{6,25–27} Environmental tobacco smoke alone contains approximately 50 known carcinogens.²⁸

WHAT CAN WE DO?

Eliminating the pollutant source is key to improving air quality and reducing associated health risks. Although EPA has the authority to address indoor air quality indirectly through regulation of outdoor air under the Clean Air Act, and the Occupational Safety and Health Administration has rules limiting some airborne hazards in workplaces, the United States lacks regulations providing the umbrella coverage needed to fully address indoor air quality.²⁹ Local and state policies have been extremely effective at controlling exposure to environmental tobacco smoke in public spaces including restaurants and bars—policies that have dramatically reduced exposure to carcinogens in indoor air that impact both workers and patrons. Yet more action is needed to protect people from toxic consumer products and building materials, including labeling laws that require complete information about the chemical ingredients in products and their possible health effects; market incentives to develop cleaner and safer

products, technologies, and buildings; and pre-market testing requirements to ensure the safety of products on the market.

How cancer develops

MIXTURES, LOW DOSES, AND WINDOWS OF VULNERABILITY

Most of us are probably exposed to dozens of carcinogens at low concentrations in the food we eat, the air we breathe, the water we drink, and the materials we encounter. But chemicals are tested for their carcinogenicity one at a time, and regulatory standards for specific chemicals are set based on the mistaken assumption that exposures to chemicals occur and deliver their risks one at a time. However, carcinogens almost certainly act within complex causal webs reflecting the cumulative interaction among risks across the life course and at various levels of organization (biological, social, and ecological) and scales (individual, family, community, society, and

ecosystem). Cancer risk is influenced by exposures to many different factors, including agents that can contribute to the disease in work environments, the general environment, diet, genetic inheritance, reproductive factors, and other lifestyle factors. Studies show that environmental contaminants may increase the risk of cancer through a variety of mechanisms, including genotoxicity, tumor promotion, hormonal action and immunotoxicity.^{30,31} Many of these effects can occur at low levels of exposure which depend not only on what a person is exposed to, but also the timing of exposures. For example, exposure to toxicants at low levels during periods of rapid growth and cell differentiation from fetal life through puberty can be an important contributor to cancer risk later in life.

Preventing cancer depends on addressing the broader set of conditions that influence risk in both our research and cancer prevention and control programs. New methods are needed to understand cancer risks associated with exposure to chemical mixtures, the effects at low doses and during critical windows of vulnerability. Although studies are beginning to reveal the interaction of chemical mixtures on a molecular level and new statistical methods are under development,³² it will take many years before experimental science fully reveals the effects of the complex mixtures to which we are all exposed in daily life. Fortunately, we know enough now to take action to reduce these cancer risks.



Every year, local and state health departments respond to more than 1,000 inquiries regarding suspected cancer clusters.



Contaminated communities

WHAT CAN WE LEARN FROM CANCER CLUSTERS?

In thousands of communities across the nation, people suspect they may be living in the midst of a cancer cluster, such as the infamous clusters linked with contaminated drinking water in Woburn, Massachusetts, and Tom's River, New Jersey.^{33,34} Every year, local and state health departments respond to more than 1,000 inquiries regarding suspected cancer clusters.^{35,36} Clusters are verified approximately 5% to 15% of the time, although a causal explanation for the elevated cancer rates is often never identified.³⁷

Given the growing recognition that most cancers have multifactorial origins, there may be more to public concerns about cancer clusters than current science and regulatory practice generally recognize. Communities with multiple chemical exposures, poor nutrition, and other cancer risk factors, often experience higher rates of cancer and other diseases. Also, our dependence on statistical significance testing means that elevations of cancer incidence within small geographic areas are often dismissed.³⁸ Unfortunately, government agencies often respond to cancer concerns



in connection with local environmental contamination by saying there is no evidence of a “statistically significant” elevation in cancer risk, or by explaining away a cancer cluster as a statistical fluke or as the result of high smoking rates or poor diets in the community.

History shows us that sometimes cancer clusters are indeed signals that a preventable exposure to a cancer-contributing substance or substances has occurred, and so it is inappropriate for cancer cluster investigations to dismiss exposure to local environmental contamination out of hand. Instead, the appropriate response to a proven or suspected cancer cluster is to use these investigations to engage concerned citizens and public health representatives in honest communication about the range of exposures, including local environmental contamination, that may increase a community’s cancer risk and identify ways to reduce that risk. Reducing or eliminating environmental pollution in a community is just as important to the health of its members as expanding programs focused on better nutrition, increasing exercise, and tobacco cessation. Not one but many interventions are needed to reduce the cancer burden in our society.

Environmental injustice

DISPARITIES IN EXPOSURE TO AIR AND WATER POLLUTANTS

In 2005, a headline-grabbing analysis by the Associated Press revealed that black Americans are 79% more likely

than whites to live in neighborhoods where industrial pollution is suspected of posing the greatest health threat.³⁹ While striking, these findings are not new. Over 20 years ago, The United Church of Christ published a landmark study, “Toxic Waste and Race in the United States” finding that the most important factor predicting the siting of toxic waste facilities across the United States was race.⁴⁰

Over the last two decades, dozens of environmental equity studies have examined whether sources of environmental risk are concentrated among racial and ethnic minorities and the poor. A recent review of the literature on differential exposures to environmental pollution found significant relationships between the ethnic and class characteristics of a

**“The poor and especially the nonwhite
poor bear a disproportionate
burden of exposure to suboptimal,
unhealthy environmental
conditions in the United States.”**

community and levels of exposure to a variety of environmental risks, including proximity to hazardous waste sites, exposures to air and water pollution, as well as other sources such as housing and the work environment.⁴¹ These authors concluded that “the poor and especially the non-white poor bear a disproportionate burden of exposure to suboptimal, unhealthy environmental conditions in the United States.” Similarly, a comprehensive meta-analysis of 49 environmental inequality studies found “ubiquitous evidence” supporting race as the main factor associated with environmental inequities.⁴²

In 1994, President Clinton’s Executive Order 12898 directed the government to ensure equality in protecting Americans from pollution. The order stated: “Each Federal agency shall make achieving environmental justice part of its mission by identifying and addressing, as appropriate, disproportionately high and adverse human health or environmental effects of its programs, policies, and activities on minority populations and low-income populations.”⁴³

During the years that followed, EPA and other federal agencies made substantial progress towards addressing the interrelated environmental, public health, economic and social inequities by ensuring greater access to and responsiveness of government for communities and ensuring the integration of environmental justice principles into all agencies’ programs, activities and rule-making processes. But in 2006, when EPA’s Office of Inspector General surveyed EPA’s programs to determine the extent to which the issue of environmental justice had been considered in various activities, it found major gaps. The Inspector General’s report stated, “Until these program and regional offices perform environmental justice reviews, the Agency cannot determine whether its programs cause disproportionately high and adverse human health or environmental effects on minority and low-income populations.”⁴⁴ A 2005 Governmental Accountability Office report reached a similar conclusion, stating that EPA devoted only minimal attention to environmental equality when developing three major rules to implement the Clear Air Act.⁴⁵

WHAT CAN WE DO?

Despite greater awareness of environmental injustices that have contributed to cancer disparities in the United States, we need more progress to ensure equitable environmental, social and economic conditions that promote health. Three broad steps will help us move forward:

- Acknowledge that some populations suffer disproportionate exposures to and effects from air and water pollutants and other environmental hazards.
- Include achieving a more equitable society among the goals of a nationwide cancer prevention agenda.
- Make sure those among us who are disproportionately affected by air and water pollutants and other environmental hazards have a voice and a hand in creating and implementing our nationwide cancer prevention agenda.

A short prescription to prevent cancer associated with air and water pollutants

Air and water pollution are often direct consequences of the industrial society in which we live. If we want to prevent cancer associated with air and water pollutants, we need to control or eliminate the release of cancer-contributing substances along the entire lifecycle of products and materials, from manufacturing to use to disposal. A comprehensive U.S. cancer prevention agenda that promotes health, prevents cancer and protects the most vulnerable members of society must address industrial and other sources of air and water pollutants. To implement such an agenda, we must act to:

- **ENFORCE** and update environmental regulations to ensure that everyone breathes clean air and drinks safe water where they live, work and play.
- **UPGRADE** water treatment facilities and distribution infrastructure across the United States in order to minimize drinking water contamination by disinfection byproducts and other contaminants found in outdated systems.
- **SUPPORT** cancer research that captures the complexities of cancer causation, including multiple exposures, low-dose effects and critical windows of vulnerability.
- **CREATE** a new chemicals regulation system that expands toxicity testing of new and existing industrial agents and consumer products and avoids releasing substances that increase cancer risk into our environments.
- **IDENTIFY** safer alternatives to cancer-contributing substances used in products and processes.
- **ACKNOWLEDGE** that while scientific certainty is seldom possible, when sufficient evidence of harm exists, we have a duty to act to prevent harm.



REFERENCES

- Environmental Protection Agency. Air Trends. Latest Findings on National Air Quality: Status and Trends through 2006. Available at: <http://www.epa.gov/airtrends/2007/index.html>. Accessed: October 28, 2008.
- Environmental Protection Agency. EPA's Report on the Environment: Highlight of National Trends. 2008: p15 Available at: http://www.epa.gov/roehd/pdf/roe_hd_layout_508.pdf. Accessed: October 28, 2008.
- Environmental Protection Agency. 2006 Toxics Release Inventory (TRI) Public Data Release Brochure. Available at: <http://www.epa.gov/tri/tridata/tri06/brochure/brochure.htm>. Accessed June 9, 2008.
- U.S. PIRG Education Fund. Toxic Pollution & Health: An Analysis of Toxic Chemicals Released in Communities across the U.S. 2007. Available at: <http://www.uspirg.org/home/reports/report-archives/healthy-communities/healthy-communities/toxic-pollution-and-health-an-analysis-of-toxic-chemicals-released-in-communities-across-the-united-states2>. Accessed: October 28, 2008.
- Cantor KP, Ward MH, Moore LE, et al. Water Contaminants. In: D Schottenfeld D, Fraumeni JF Jr, eds. Cancer Epidemiology and Prevention, 3rd ed. New York: Oxford University Press, 2006.
- Krewski D, Lubin JH, Zielinski JM, et al. Residential Radon and Risk of Lung Cancer, *Epidemiology*. 2005;6(2):137–145.
- Focazio MJ, Welch AH, Watkins SA, et al. A Retrospective Analysis of Arsenic on the Occurrence of Arsenic in Ground-Water Resources of the United States and Limitations in Drinking-Water Supply Characteristics. Reston, Va.: U.S. Geological Survey Water-Resources Investigations Report 99-4279. 1999.
- Ward MH, Rusiecki JA, Lynch CF, et al. Nitrate in Public Water Supplies and the Risk of Renal Cell Carcinoma, *Cancer Causes & Control*. 2007;18(10):1141–1151.
- Olson E. What's on Tap. National Resource Defense Council. June 2003. Available at: <http://www.nrdc.org/water/drinking/uscities/pdf/whatsontap.pdf>. Accessed November 6, 2008.
- Katsouyanni K and Pershagen G. Ambient Air Pollution Exposure and Cancer, *Cancer Causes and Control*. 1997;8:284–291.
- Clapp RC, Jacobs MM, Loechler EL. Environmental and Occupational Causes of Cancer: New Evidence 2005–2007, *Reviews on Environmental Health*. 23(1): 1–36.
- Clapp RC, Howe GK, Jacobs MM. Environmental and Occupational Causes of Cancer: A Review of Recent Scientific Literature. Lowell Center for Sustainable Production. September 2005.
- Cohen AJ. Outdoor Air Pollution and Lung Cancer, *Environmental Health Perspectives*. 2000;108(Suppl 4):743–750.
- Cohen AJ, Pope III AC. Lung Cancer and Air Pollution, *Environmental Health Perspectives*. 1995;103(Suppl 8):219–224.
- Boffetta P, and Nyberg F. Contribution of Environmental Factors to Cancer Risk, *British Medical Bulletin*. 2003;68:71–94.
- Abbey DE, Nishino N, McDonnel WF, et al. Long-term Inhalable Particles and Other Air Pollutants Related to Mortality in Nonsmokers, *American Journal of Respiratory and Critical Care Medicine*. 1999;159:373–382.
- Dockery DW, Pope CA III, Xu X, et al. An Association Between Air Pollution and Mortality in Six U.S. Cities, *New England Journal of Medicine*. 1993;329:1753–1759.
- Pope CA III, Burnett RT, Thun MJ, et al. Lung Cancer, Cardiopulmonary Mortality, and Long-term Exposure to Fine Particulate Air Pollution, *Journal of the American Medical Association*. 2002;287:1132–1141.
- Pope CA III, Thun MJ, Namboodiri MM, et al. Particulate Air Pollution as a Predictor of Mortality in Prospective Study of U.S. Adults, *American Journal of Respiratory and Critical Care Medicine*. 1995;151:669–674.
- Moeller DW. *Environmental Health*, 3rd Edition. U.S.: Harvard University Press, 2005.
- Environmental Protection Agency. Toxic Air Pollutants. Latest Findings on National Air Quality. Available at: <http://www.epa.gov/air/airtrends/2007/report/toxic.pdf>. Accessed: October 28, 2008.
- Klepeis NE, Nelson WC, Ott WR, et al. The National Human Activity Pattern Survey (NHAPS): A Resource for Assessing Exposure to Environmental Pollutants, *Journal of Exposure Analysis and Environmental Epidemiology*. 2001;11:231–52.
- Wallace L. The Total Exposure Assessment Methodology (TEAM) Study: Summary and Analysis, Vol 1. Washington, DC: U.S. Environmental Protection Agency. 1987.
- Spengler JD. Sources and Concentrations of Indoor Air Pollution. In: Samet JM, Spengler JD, eds. *Indoor Air Pollution: A Health Perspective*. Baltimore: Johns Hopkins University Press, 1991:33–67.
- Dales R, Liu L, Wheeler AJ, et al. Quality of Indoor Residential Air and Health, *Canadian Medical Association Journal*. 2008;179(2):147–52.
- Zahm SH, Ward MH. Pesticides and Childhood Cancer, *Environmental Health Perspectives*. 1998;106(Suppl 3):893–908.
- Belpomme D, Irigaray P, Hardell L, et al. The Multitude and Diversity of Environmental Carcinogens, *Environmental Research*. 2007;105(3):414–429.
- National Cancer Institute. Fact Sheet. Second Hand Smoke: Questions and Answers. Available at: <http://www.cancer.gov/cancertopics/factsheet/Tobacco/ETS>. Accessed November 6, 2008.
- Steinmann A. Human Exposure, Health Hazards, and Environmental Regulations, *Environmental Impact Assessment Review*. 2004;24:695–710.
- Dich J, Zahm SH, Hanberg A, et al. Pesticides and Cancer, *Cancer Causes and Control*. 1997;8:420–443.
- Webster TF and Comner B. Overview: The Dioxin Debate. In *Dioxins and Health*, Second Edition. Hoboken, NJ: John Wiley & Sons, Inc., 2003.
- Carpenter DO, Arcaro K and Spink DC. Understanding the Human Health Effects of Chemical Mixtures, *Environmental Health Perspectives*, 2002 (Supp 1): 25–42.
- Costas K, Knorr RS, Condon SK. A Case-Control Study of Childhood Leukemia in Woburn, Massachusetts: The Relationship Between Leukemia Incidence and Exposure to Public Drinking Water, *Science of the Total Environment*. 2002;300(1–3):23–35.
- New Jersey Department of Health and Senior Services and Agency for Toxic Substances and Disease Registry. Case-control Study of Childhood Cancers in Dover Township (Ocean County), New Jersey. December 2001. Available at: http://www.state.nj.us/health/eoh/hhazweb/case-control_pdf/Volume_1/Voli.pdf. Accessed November 7, 2008.
- Trumbo CW. Public Requests for Cancer Cluster Investigations: a Survey of State Health Departments, *American Journal of Public Health*. 2000;90:1300–1302.
- Greenberg M, Wartenberg D. Communicating to an Alarmed Community about Cancer Clusters: a Fifty State Survey, *J Community Health* 1991;16:71–82.
- Bender AP, Williams AN, Johnson RA, et al. Appropriate Public Health Responses to Clusters: the Art of Being Responsibly Responsive, *American Journal of Epidemiology*. 1990;132(Suppl 1):S48–S52.
- Thun MJ, Sinks T. Understanding Cancer Clusters, *A Cancer Journal for Clinicians*. 2004;54:273–280.
- David Pace. More Blacks Live with Pollution. AP Online, December 13, 2005. Chicago.
- United Church of Christ. Toxic Wastes and Race in the United States. New York: United Church of Christ Commission on Racial Justice. 1987.
- Evans GW, Kantrowitz E. Socioeconomic Status and Health: the Potential Role of Environmental Risk Exposure, *Annual Review of Public Health*. 2002;23:303–31
- Ringquist EJ. Assessing Evidence of Environmental Inequities: A Meta-Analysis, *Journal of Policy Analysis and Management*. 2005;24(2):223–247.
- Executive Order 12898 of February 11, 1995. Federal Actions to Address Environmental Justice in Minority Populations and Low-Income Populations. Federal Register. February 16, 1994;59(32). Available at: <http://www.archives.gov/federal-register/executive-orders/pdf/12898.pdf>. Accessed November 4, 2008.
- Environmental Protection Agency, Office of Inspector General. Evaluation Report: EPA Needs to Conduct Environmental Justice Reviews of Its Programs, Policies and Activities. Report No: 2006-p-00034; September 18, 2006. Available at: <http://www.epa.gov/oig/reports/2006/20060918-2006-P-00034.pdf>. Accessed November 4, 2008.
- U.S. Government Accountability Office. Environmental Justice: EPA Should Devote More Attention to Environmental Justice When Developing Clean Air Rules. Report GAO-05-289. July 2005. Available at: <http://www.gao.gov/new.items/d05289.pdf>. Accessed November 4, 2008.

This booklet was written by Molly Jacobs (Lowell Center for Sustainable Production at the University of Massachusetts Lowell) and Dick Clapp (Boston University School of Public Health & Lowell Center for Sustainable Production). Editorial assistance was provided by Shelby Gonzalez (Commonwealth). The content of this booklet is also the result of research, discussions and thoughtful scientific review through the Collaborative on Health and the Environment's (CHE) Cancer Working Group. Specific contributors from CHE Cancer Working Group include: Ted Schettler (Science and Environmental Health Network), Michael Lerner and Eleni Sotos (Commonwealth), Charlotte Brody (Green for All), Jeanne Rizzo (Breast Cancer Fund), Marion Kavanaugh-Lynch (University of California), and Steve Helig (San Francisco Medical Society). The booklet was designed by John Svatek at Half-full Design. December 2008



Additional copies of this booklet can be downloaded at www.healthandenvironment.org and www.sustainableproduction.org.

Printed on New Leaf Reincarnation Matte paper. FSC-certified, 100% recycled, 50% post-consumer content, processed chlorine free.

