



# PRENATAL EXPOSURE TO AIR POLLUTION AND NEURODEVELOPMENT IN A NEW YORK CITY COHORT

Frederica Perera DrPH, PhD

The Columbia Center for Children's  
Environmental Health  
Columbia University  
Mailman School of Public Health

CHE Partnership Call  
March 19, 2014



# THE GROWING BURDEN OF NEURODEVELOPMENTAL DISORDERS IN CHILDREN

- 15% of children in the U.S. ages 3 to 17 years are affected by neurodevelopmental disorders such as ADHD, learning disorders, or intellectual disability
- 20% global prevalence of child and adolescent mental disorders
- Rates of these conditions have increased in recent decades—the US, Europe, and China



# DISPROPORTIONATE EXPOSURE/RISK

- Toxic sources such as for PAH are disproportionately sited in lower income communities of color
- Higher exposure to pesticides and certain EDC chemicals in buildings, food and consumer products
- These communities also experience more material hardship and psychosocial stress
- Pollutants and psychosocial stress may act through common mechanistic and physiological pathways
- Need to document interactions in order to intervene effectively



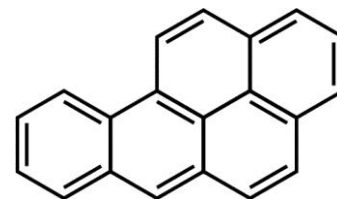
# MULTIPLE ENVIRONMENTAL EXPOSURES OCCUR DURING PREGNANCY AND EARLY CHILDHOOD

- PAH/air pollution
- Pesticides
- Chemicals (BPA, Phthalates PBDEs etc.)
- Metals
- Often co-occur with social stressors and adverse genetic and nutritional factors

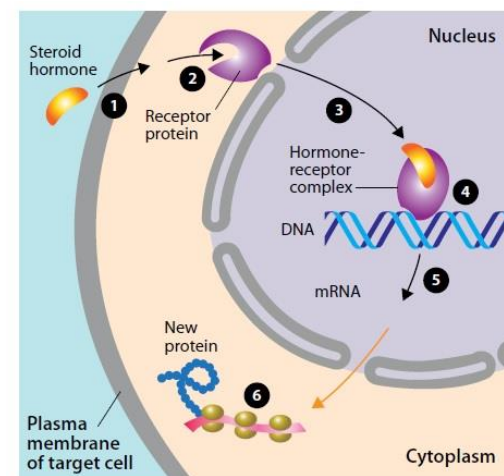
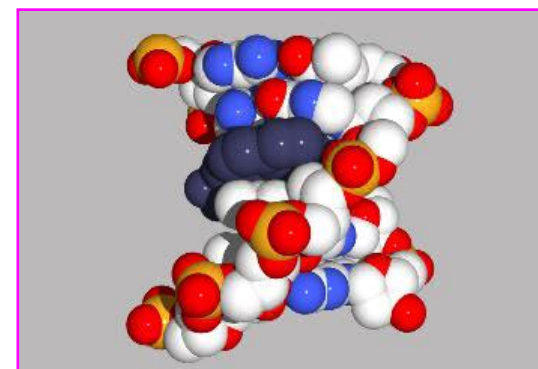




# PAH



- Linked to neurodevelopmental toxicity, asthma, immunotoxicity, carcinogenicity, obesity
- PAH are both genotoxic and endocrine disruptors
  - PAH form DNA adducts and cause mutations
  - PAH such as B[a]P resemble steroid hormones
  - Induce estrogen-dependent cell proliferation
  - Affect gene expression in hormonal regulatory pathways (e.g., bind to the AH receptor) and activate transcription of CYP1A1 and CYP1B1)

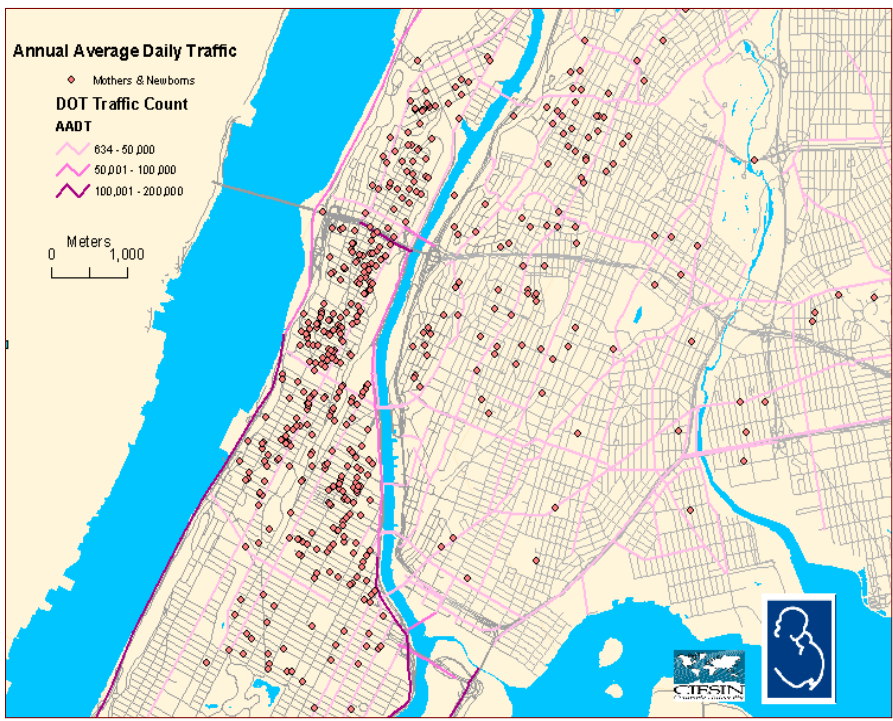


[State of the Science of Endocrine Disrupting Chemicals, 2012]





# CCCEH NYC COHORT STUDY: 720 MOTHER-CHILD PAIRS ENROLLED



- Mothers non-smoking and healthy, ages 18-35
- African American and Dominican Residents of northern Manhattan and the S. Bronx
- 64% of mothers had completed high school education
- Mostly low income
- Recruited during pregnancy: maternal urine and blood collected
- Prenatal personal air monitoring

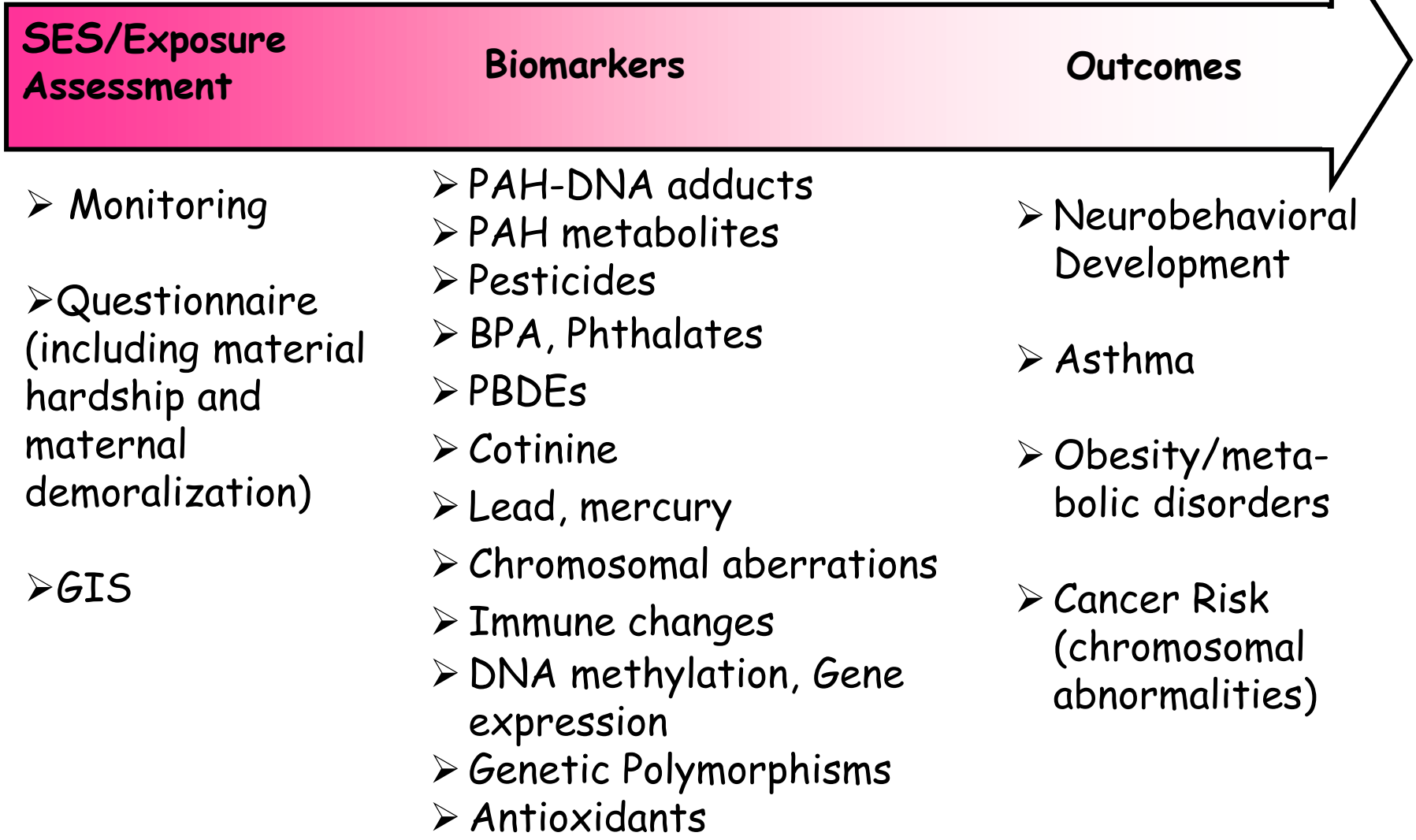
Cord blood and placenta collected at birth, blood and urine from children (2 yr-adolescence)

Follow-up of children through adolescence





# COHORT STUDIES: REPEAT MEASURES ON WOMEN AND CHILDREN (PREGNANCY → ADOLESCENCE)



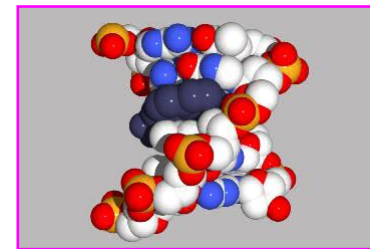


# WIDESPREAD EXPOSURE TO PAH

- 100% of pregnant mothers exposed to airborne PAH
  - mean  $3.7 \text{ ng/m}^3$ , range  $0.36 \text{ ng/m}^3$  to  $36.47 \text{ ng/m}^3$
- 40% of cord and maternal white blood cells had detectable PAH-DNA adducts
- 100% pregnant mothers had detectable levels of PAH metabolites
- >98% of 3 year olds have at least 6 detectable metabolites in their urine



**Air  
Sampler**

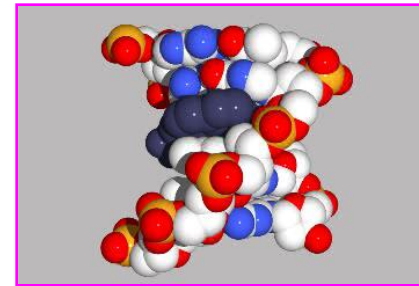






# PRENATAL PAH AND COGNITIVE/ BEHAVIORAL PROBLEMS IN THE CCCEH COHORT: METHODS

- PAH: personal monitoring
- PAH-DNA Adducts
  - specifically B[a]P-DNA adducts
  - measured by HPLC-Fluorescence
- Bayley Scales, WPPSI, WISC etc.
- CBCL, Child Behavior Checklist (screen for behavioral problems), Connors (ADHD) etc.





# PAH AND DEVELOPMENTAL DELAY AT AGE 3 IN THE CCCEH COHORT

- High prenatal exposure to PAH (upper quartile) was associated with lower mental development index at age 3 [ $\beta = -5.69$ ; 95% CI, -9.05 to -2.33;  $p < 0.01$ ).
- Among the highly exposed children the odds of having developmental delay were 2.89 times greater than the odds among unexposed children



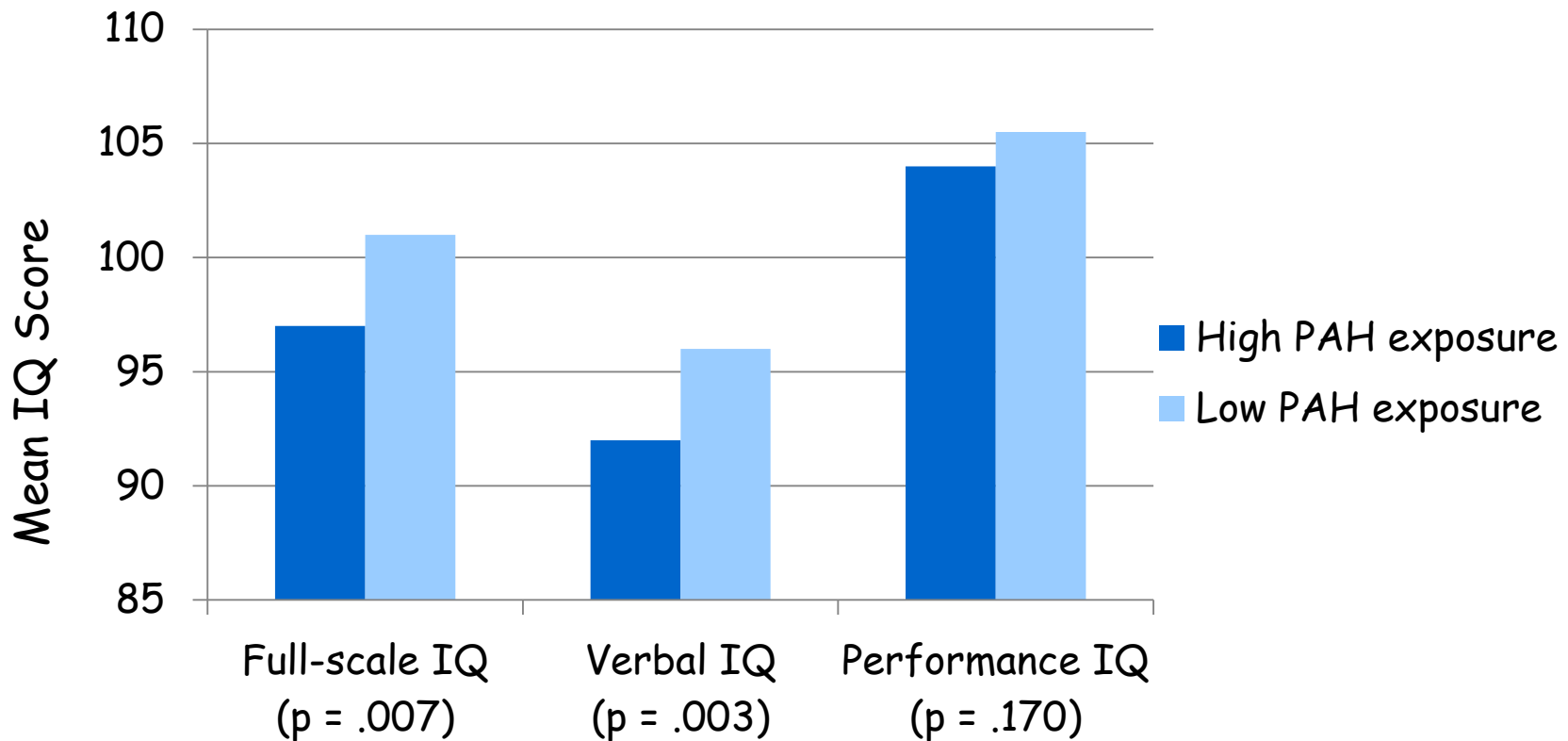
[Perera et al., 2006]

Adjusting for sex, ethnicity, gestational age, quality of home (caretaking) environment, prenatal exposure to ETS and CPF, age at assessment.



# Prenatal PAH and IQ At Age 5 in the CCCEH Cohort

High prenatal PAH levels associated with reduced full-scale and verbal IQ scores



Adjusting for prenatal ETS, sex, gestational age, maternal IQ, home environment, maternal education, ethnicity, diet and other covariates (N=249)

[Perera et al., 2009]



# PRENATAL PAH/PAH-DNA ADDUCTS AND CHILD BEHAVIORAL PROBLEMS (AGE 6-8)

Exposure	Syndrome Scales Anxious /Depressed			DSM-Oriented Scales Anxiety Problems		
	Poisson Raw			Logistic Model		
	Exp beta	95% CI	p-value	OR	95% CI	p-value
PAH (high/low) (n=253)	1.45	(1.22, 1.72)	<b>&lt;0.0001</b>	4.59	(1.46, 14.27)	<b>0.009</b>
Maternal HPLC adducts (n=223)	1.23	(1.04, 1.46)	<b>0.019</b>	2.19	(0.79, 6.07)	0.133
Cord HPLC adducts (n=148)	1.46	(1.19, 1.78)	<b>&lt;0.001</b>	2.53	(0.84, 7.65)	0.100

Adjusting for prenatal ETS, sex, gestational age, maternal IQ, home environment, maternal education, ethnicity, prenatal demoralization, and age at assessment<sup>00</sup>



# CUMULATIVE PAH EXPOSURE (HIGH/LOW) AND ADHD AT AGE 9

	Air PAH			Maternal adduct			Cord adduct		
	n	Est.	p-value	n	Est.	p-value	n	Est.	p-value
CBCL DSM: ADHD									
Connors Subscales:									
ADHD Index									
DSM-IV ADHD Total									
DSM-IV Hyper active- Impulsive									
DSM-IV Inattentive									

Adjusting for ETS, gender, maternal education, ethnicity, gestational age, maternal demoralization, home caretaking environment, maternal ADHD



# INTERACTIONS BETWEEN POLLUTANTS AND PSYCHOSOCIAL FACTORS

Does the combination of physical and psychosocial stressors during fetal development magnify the effect of each exposure?

Documentation of interactions will allow more effective interventions to protect the most vulnerable.

Everyone benefits.





# INTERACTION OF PRENATAL PAH EXPOSURE WITH MATERIAL HARDSHIP ON CHILD IQ AT AGE 7 (NYC)

- Hypothesis: Material hardship exacerbates the effect of PAH on child IQ at age 7
- Material hardship: a measure of the inability of families to meet their basic needs for housing, clothing, food
- PAH-DNA adducts measured in cord blood as an individual biomarker of prenatal PAH exposure
- Child IQ assessed via the Wechsler Intelligence Scale for Children (WISC-IV) at 7 years

[Vishnevetsky et al., in revision]

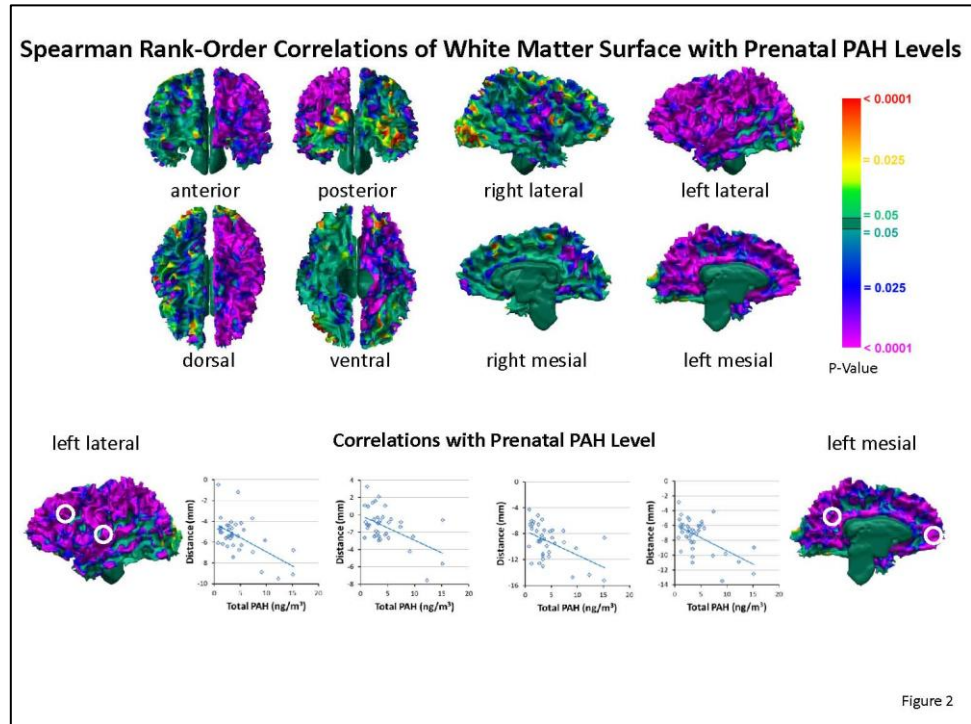


# IQ SCORES IN THE LOW AND HIGH CORD ADDUCT GROUPS STRATIFIED BY CUMULATIVE HARDSHIP

[Perera et al., in revision]

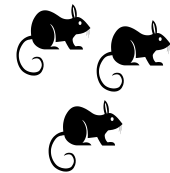
# INVESTIGATION OF MECHANISMS ONGOING

- MRI
- PARALLEL LABORATORY STUDIES
- EPIGENETIC ANALYSES



Environmental exposures (with access to target tissue) Epigenetics

F2



Neurobiology, behavior, metabolism, and immune function



# CONCLUSION

- Evidence of continuing effects of prenatal or cumulative exposure to PAH on child cognitive and neurobehavioral development through age 9
- Evidence of interactions with psychosocial stressors
- Implications for children's academic performance and lifetime earnings
- Need for multi-faceted interventions to reduce neurotoxic exposures and alleviate stress due to poverty



## COLLEAGUES

**Center Investigators, Research Workers, and Staff:** H. Andrews, F. Arias, G. Badia, R. Bansal, K. Barnabe, M. Borjas, L. Calero, F. Champagne, S. Chillrud, J. Chin, S. Chu, Y. Cheung, L. Cruz, A. Cole, B. Cortes, A. Creighton, D. Diaz, S. Diaz, A. Divjan, K. Donohue, D. Evans, G. Freyer, W. Garcia, J. Genkinger, I. Goldstein, A. Hassoun, J. Herbstman, L. Hoepner, D. Holmes, M. Horton, C. Howe, L. Hua, T. Huang, S. Hsu, H. Jiang, X. Jin, K. Jung, A. Just, P. Kinney, S. Lederman, B. Liu, G. Lovasi, L. Qu, A. Qu, C. Maher, A. Margolis, R. Martinez, R. Miller, K. Moors, S. Nath, S. Oberfield, C. Olivo, M. Orjuela, M. Perzanowski, B. Peterson, L. Qu, J. Quinn, V. Rauh, J. Ramirez-Carvey, M. Reyes, E. Roen, M. Rosa, A. Rundle, B. Sheares, D. Tang, V. Thomas, C. Tobon, T. Tong, I. Suen, M. Taha-Furst, Y. Tse, N. Uemura, J. Vishnevetsky, S. Wang, W. Wang, Y. Wang, R. Whyatt, Y. Xiao, J. Yu, H. Zhang, D. Zhu

**WE ACT:** P. Shepard, O. Dotson-Newman

**NYSPI:** B. Peterson and MRI study staff; **UNIVERSITY OF CINCINNATI:** S. M. Ho, W. Tang; Xiang Zhang **CDC:** A. Calafat, A. Sjodin; **Univ. of Krakow:** W. Jedrychowski, J. Jankowski, I. Lisowska-Miszczuk, I. Kaim, E. Mroz, A. Penar, A. Skarupa, Z. Skolicki, E. Sochacka-Tatara, A. Szpanowska-Wohn, A. Kieltyka, E. Flak, R. Majewska, A. Pac



# THIS RESEARCH HAS BEEN MADE POSSIBLE BY JOINT FUNDING FROM:

- The National Institute of Environmental Health Sciences (NIEHS)
- U.S. Environmental Protection Agency (EPA)
- Private Foundations & Individuals

Special thanks  
to the families  
and children



I have no conflicts of interest to report.